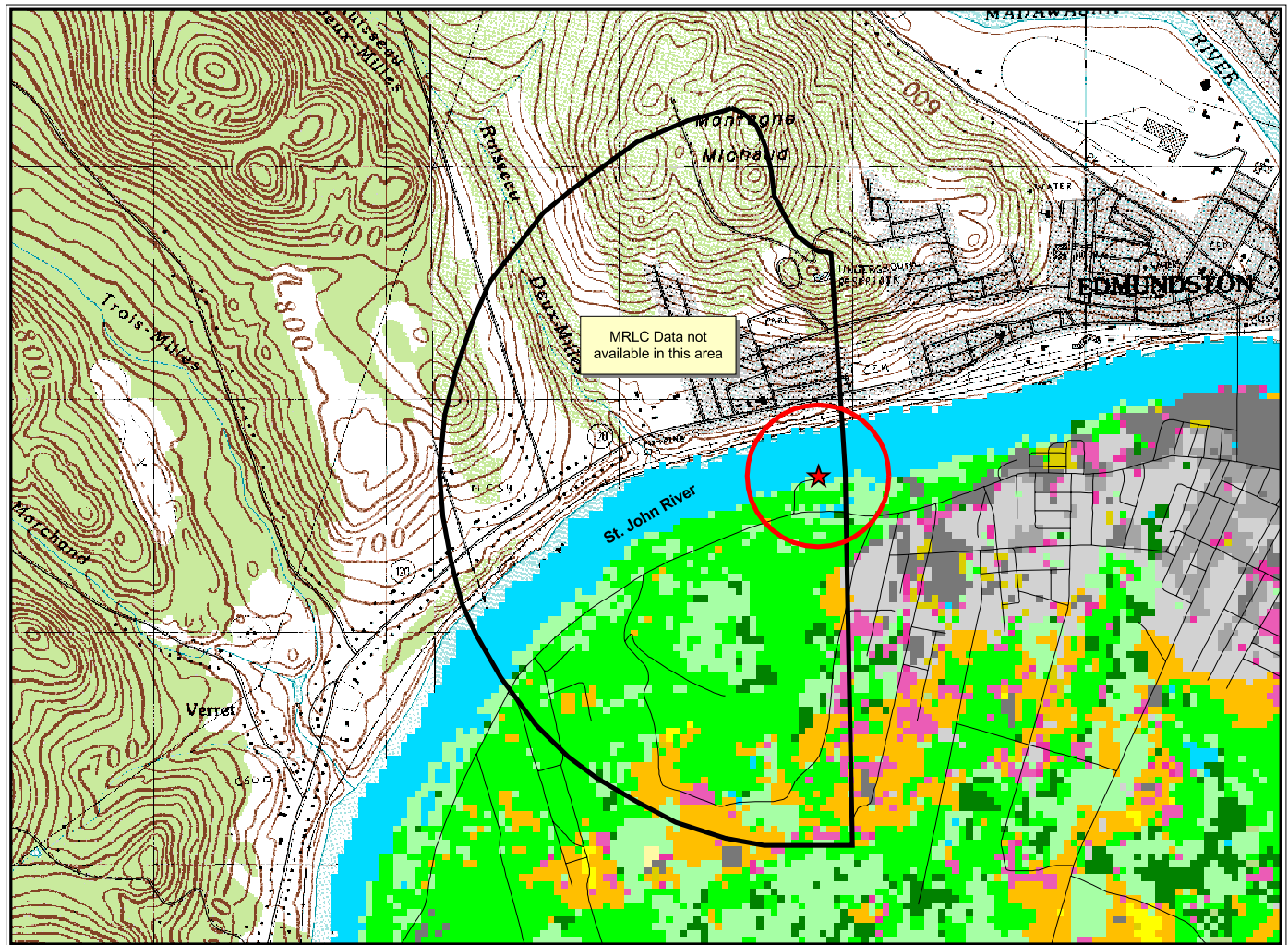




Madawaska Public Water Supply & Multi-resolution Land Characterization



2000 0 2000 4000 Feet



Legend

- | | | |
|---|----------------------------------|------------------------------|
| ★ Madawaska Water District Intake | Commercial/Ind/Trans | Pasture/Hay |
| ○ 1000 ft. Intake Buffer | Bare Rock/Sand/Clay | Row Crops |
| ○ St. John River Local Watershed Boundary | Quarries/Strip Mines/Gravel Pits | Small Grains |
| ~ Public Roads | Transitional | Urban/Recreational Grasses |
| Multi-resolution Land Characterization | Deciduous Forest | Woody Wetlands |
| Open Water | Coniferous Forest | Emergent Herbaceous Wetlands |
| Low Intensity Residential | Mixed Forest | No Data |
| High Intensity Residential | Deciduous Shrubland | |
| | Orchards/Vineyards/Other | |

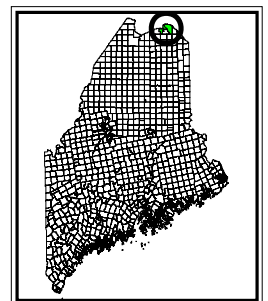


Figure 2

Scale 1:30,000
1 inch = 2,500 feet

3/3/03

- 1) Base data layers are from the Maine Office of GIS.
- 2) Watershed boundary, intake and buffer locations are from the Maine Drinking Water Program.
- 3) Land cover data from the U.S. Geological Survey & the U.S. Environmental Protection Agency.
- 4) Data are for planning purposes only.